



DTX Studio™ Lab 1.12

Installation Guide

Disclaimer of liability: This product is part of an overall concept and may only be used in conjunction with the associated original products according to the instructions and recommendation of Nobel Biocare, hereinafter referred to as 'the Company'. Non-recommended use of products made by third parties in conjunction with products of the Company will void any warranty or other obligation, express or implied. The user has the duty to determine whether or not any product is suitable for the particular patient and circumstances.

The Company disclaims any liability, express or implied, and shall have no responsibility for any direct, indirect, punitive or other damages, arising out of or in connection with any errors in professional judgment or practice in the use of these products. The user is also obliged to study the latest developments in regard to this product and its applications regularly. In cases of doubt, the user has to contact the Company. Since the utilization of this product is under the control of the user, they are his/her responsibility. The Company does not assume any liability whatsoever for damage arising thereof. Please note that some products detailed in this document may not be regulatory cleared, released or licensed for sale in all markets.

Cautions: Close collaboration between surgeons, restorative dentists and dental technicians is essential for a successful treatment outcome.

In addition, it is recommended active and up-to-date antivirus and antimalware software, together with a correctly configured firewall are installed on the computer where DTX Studio™ Lab is to be used.

DTX Studio™ Lab has dependencies on the operating systems. Therefore be sure only to use DTX Studio™ Lab with approved operating systems. More information about which operating systems are approved and how to work with DTX Studio™ Lab can be found in the 'Instructions for Use', the 'Computer guidelines', and 'Help file' documents for DTX Studio™ Lab. Please request the latest digital or printed version from a local representative.

Additional information: A digital version of the DTX Studio™ Lab 'Instructions for Use' is available as well. Please request it from a local representative.



Manufacturer:

Nobel Biocare AB
Box 5190, 402 26
Västra Hamngatan 1, 411 17
Göteborg, Sweden
Phone: +46 31 81 88 00
Fax: +46 31 16 31 52
www.nobelbiocare.com



Consult instructions for use

Before You Start

Before you start the installation of DTX Studio™ Lab on a Windows® computer, please do the following:

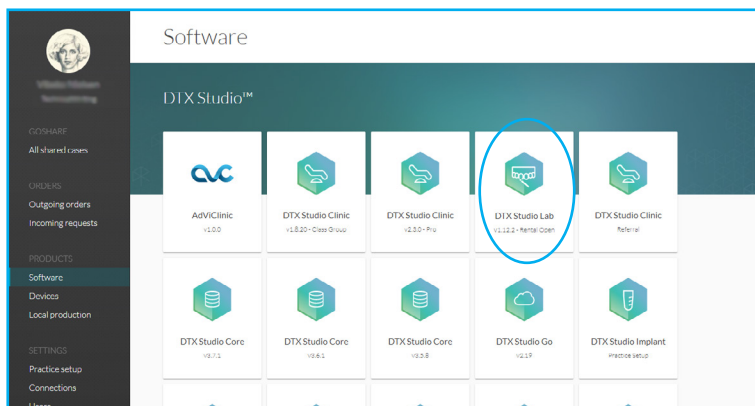
- Check whether your computer meets the recommended system requirements. More information on these requirements can be found in the ‘Computer Guidelines for DTX Studio™ Lab’ document. Please find this document on DTX Studio™ Go or contact your local representative to request a digital or printed copy of the latest version.
- Check that your computer has access to the Internet.
- Check whether your Windows® version is up to date.
- Ensure that your computer can open PDF files (double-click on a PDF file to test). Adobe® Reader® is an example of software typically used to read PDF files.
- Log on to the Windows® OS with a user account that has administrator rights.
- Disable the Windows® User Account Control.
- We also recommend that all other software applications on your computer are closed before you start installing DTX Studio™ Lab.

Where to Find the Installer and the Installation Key

1. Go to go.dtxstudio.com. The portal is best viewed with Chrome and Edge browsers.
2. Log in with the username and password that were sent to you (sender: no-reply@dtxstudio.com). Should it be the first time you log in to DTX Studio™ Go, you will be prompted to change the password.

Note: If you did not receive username and password by e-mail, please contact customer support.

3. On the **Software** tab, click the DTX Studio™ Lab tile.



4. On the DTX Studio™ Lab page, copy the installation key.

Installing DTX Studio™ Lab

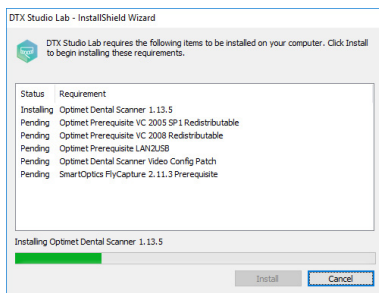
INSTALLING DTX STUDIO™ LAB

1. Double-click DTXStudioLab(x64).exe.

The DTX Studio™ Lab installation program will search your computer for prerequisites. You will see a list of required items that need to be installed on your computer.

Click **Install** to continue. To abort the installation procedure, click **Cancel**.

The progress of the installation is shown for each prerequisite.



Note: DTX Studio™ Lab requires Microsoft .Net framework to be installed on your computer. If your computer does not have a compatible Microsoft .Net framework installed, you will get a request to download and install it. In this case, please continue with installation of the Microsoft .Net framework.

2. The prerequisites are now installed. A welcome message for the DTX Studio™ Lab installation wizard appears. Click **Next**.
3. The DTX Studio™ Lab End-user License Agreement is displayed. Read it carefully. You can also print this information. To accept the agreement, click **I accept the terms in the license agreement**.
4. Click **Next**.
5. Choose a **Destination folder** for DTX Studio™ Lab. This is the folder where the software files will be saved. By default, the destination folder is C:\Program Files\DTXStudioLab. If you want to change this location, click **Change**, browse to the desired folder and click **OK**. Then click **Next**.

Note: This DTX Studio™ Lab version does not support non-Latin characters in the path name.

6. To review or change any of your installation settings, click **Back**. Otherwise, click **Install** to start the installation. This may take several minutes. A progress bar is shown.
7. Once the installation wizard is completed, click **Finish**.

Note: DTX Studio™ Lab will not open automatically. If you would try to start DTX Studio™ Lab now, you will receive a notification that you first need to install the implant library.

INSTALLING THE IMPLANT LIBRARY AND THE TOOTH LIBRARY

Install the latest version of the implant library and tooth library.

1. Open a web browser, go to go.dtxstudio.com, and log in.
2. On the **Software** tab, hover over the DTX Studio™ Lab tile and click **Details**.
3. Select **Additional resources**.
4. Select the product version.
5. Click one of the following files:
 - **DTXStudioLabImplantLibrary_version.number.exe** to download the implant library
 - **DTXStudioLabExtraToothLibrary_version.number.exe** to download the tooth library (optional)

Note: Installing the tooth library is optional, as it is possible to create tooth restoration designs with the generic tooth libraries from exoCAD. Once you have installed the tooth library though, every tooth library update will be mandatory.

6. Browse to the folder where you want to save the downloads and click **Save**.
7. Go to that folder and double-click the .exe file (DTXStudioLabImplantLibrary_*version.number*.exe or DTXStudioLabExtraToothLibrary_*version.number*.exe).

Note: If you get a notification from Microsoft® User Account Control, click **Yes** to allow this app to make changes to your device.

8. The InstallShield Wizard opens. Click **Next**.
9. Select **Accept** to confirm that you agree that the End User License Agreement of DTX Studio™ Lab also applies to this data/library. Click **Next**.
10. The destination folder is shown (by default C:\Program Files\DTX Studio Lab\CAD). This path cannot be changed. Click **Next**.
11. Click **Install**.
12. Click **Finish**.

Notes

- If you have a KaVo LS 3 Scanner, please continue with “Configuring DTX Studio™ Lab with the KaVo LS 3 Scanner” on page 6.
- If you have a NobelProcera® 2G scanner, please continue with “Configuring DTX Studio™ Lab with the NobelProcera® 2G Scanner” on page 8.

Configuring DTX Studio™ Lab with the KaVo LS 3 Scanner


CONFIGURING DTX STUDIO™ LAB

1. After the installation of DTX Studio™ Lab, the software configuration wizard will open. If you have an LS 3 scanner available, you may connect it your computer now. Once connected, the necessary drivers are installed automatically. Please wait for the installation to finish.
2. The DTX Studio™ Lab End-user License Agreement is shown. Please review this agreement and click **I accept the terms in the license agreement**. Click **Next**.
3. Enter your installation key and click **Next**.
4. Select a **Working folder**. This is the location where you will save your DTX Studio™ Lab cases.
Note: If you create a working folder in the Local AppData folder, make sure there are no spaces in the path name. Please also note that this DTX Studio™ Lab version does not support non-Latin characters in the path name.
5. On the **Configure devices** page, please select your **LS 3** scanner and click **Next**.
Note: The selected LS 3 scanner can be changed afterwards in the settings menu.
6. A notification will be show that the software was successfully installed. Click **Finish**.
7. Both the DTX Studio™ Lab software and the KaVo Network Configurator wizard are launched. Continue with the following steps in the Kavo Network Configurator wizard to configure your LS 3 scanner for use with your computer.

KAVO NETWORK CONFIGURATOR WIZARD

1. Select one of the following options:
 - **USB to Ethernet adapter (default)**: Select this option if you are using the network adapter supplied with the scanner to connect the scanner to the computer.
 - **Network cable**: to connect the scanner in your local area network.
2. Click **Select**.
3. If you selected **USB to Ethernet adapter (default)**, a list of available networks is shown. Select the network name associated with the adapter supplied with the scanner. Make sure it is the adapter that connects the scanner with your computer. If required, click **Show advanced settings** to change the **IP address**, **Subnet mask** or **Default gateway**. Click **Select** to confirm. A warning will be displayed because changing the adapter will change the settings of the network associated with the adapter. Click **Yes** to confirm. Switch off the scanner, restart your computer and switch the scanner back on.
4. If you selected **Network cable**, the configuration wizard will close. Switch off the scanner, restart your computer and switch the scanner back on. Next, you will have to enter the computer's IP address on the LS 3 scanner screen. To do this, tap on **Settings** on the LS 3 scanner screen to enter the settings. On this screen, tap to change the computer's IP address. On the next screen, tap once again to change the computer's IP address. Here you can enter the IP address of the computer for the network in which both the computer and the scanner are connected. Click **Apply** to continue. Your scanner is now connected to the computer.

Note: To start this wizard manually, go to C:\Program Files\DTXStudioLab and double-click KaVoLS3NetworkConfigurator.exe. The scanner network configuration can also be adjusted later via the settings link on the touch panel of the KaVo LS 3 scanner.

Double-click the DTX Studio™ Lab icon  to start the software and log in. Alternatively, start DTX Studio™ Lab by clicking the Windows® Start button, browsing the list of all programs and clicking the DTX Studio™ Lab option.

Note: The username and password for DTX Studio™ Lab is the same as your username and password for DTX Studio™ Go.

A website containing the 'Instructions for Use' documents in the different available languages is displayed. Choose your language and read these instructions carefully.

Before you start designing in DTX Studio™ Lab, please insert the DTX Studio™ Lab design dongle in your workstation.

The End-user License Agreement is available at all times in the **About** dialog within DTX Studio™ Lab, under the DTX Studio™ Lab menu. In the same menu, you will also find a link to the 'Instructions for Use' document.

TECHNICAL SUPPORT

If you encounter any problems during the installation, please contact your local customer support.


Configuring DTX Studio™ Lab with the NobelProcera® 2G Scanner

CONFIGURING DTX STUDIO™ LAB

1. After the installation of DTX Studio™ Lab, the software configuration wizard will open.
2. The DTX Studio™ Lab End-user License Agreement is shown. Please review this agreement and click **I accept the terms in the license agreement**. Click **Next**.
3. Enter your installation key and click **Next**.
4. Select a **Working folder**. This is the location where you will save your DTX Studio™ Lab cases.
Note: If you create a working folder in the Local AppData folder, make sure there are no spaces in the path name. Please also note that this DTX Studio™ Lab version does not support non-Latin characters in the path name.
5. On the **Configure devices** page, please select your **NobelProcera 2G** scanner and click **Next**.
6. A notification will be shown that the software was successfully installed. Click **Finish**.
7. DTX Studio™ Lab is launched.
8. Restart your computer in order to be able to set up your NobelProcera® 2G scanner network. Once restarted, continue with the following steps to configure your NobelProcera® 2G scanner for use with your computer.

NOBELPROCERA® 2G SCANNER NETWORK CONFIGURATION

1. Connect the NobelProcera® 2G scanner to your computer and switch it on. The Windows® drivers are installed automatically.
Note: It is of importance that the scanner is always connected to the same USB port. When you plug the scanner into a port other than the one used during the installation, for example when moving the scanner to a different location, the scanner may not connect to the program. It is recommended to note down or label the port the scanner is plugged into.
2. Look for the Optimet.NetworkConfigurator.exe file in the folder C:\Program Files (x86)\Optimet\Dental Scanner. Right-click the file and choose **Run as administrator**.
3. In the **User Properties** dialog, enter **User name** and **Domain name** (or computer name if you work in a workgroup).
4. Click **OK**.
5. Select the correct network interface card — LAN9500 USB 2.0 to Ethernet 10/100 adapter — and click **OK**. If this network interface card is not yet shown, wait until the USB device driver software is installed and the **LAN9500 USB 2.0 to Ethernet 10/100 adapter** appears.

Double-click the DTX Studio™ Lab icon  to start the software and log in. Alternatively, start DTX Studio™ Lab by clicking the Windows® Start button, browsing the list of all programs and clicking the DTX Studio™ Lab option.

Note: The username and password for DTX Studio™ Lab is the same as your username and password for DTX Studio™ Go.

A website containing the 'Instructions for Use' documents in the different available languages is displayed. Choose your language and read these instructions carefully.

Before you start designing in DTX Studio™ Lab, please insert the DTX Studio™ Lab design dongle in your workstation.

The End-user License Agreement is available at all times in the **About** dialog within DTX Studio™ Lab, under the DTX Studio™ Lab menu. In the same menu, you will also find a link to the 'Instructions for Use' document.

TECHNICAL SUPPORT

If you encounter any problems during the installation, please contact your local customer support.